

FREEHOLD



House - Semi-Detached

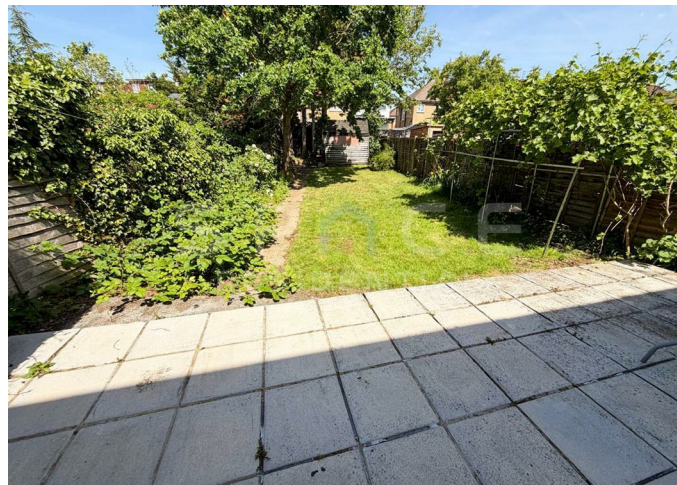
THREE BEDROOM SEMI- DETACHED HOUSE

Offers In Excess Of

£575,000

FEATURES

- THREE BEDROOMS
- FAMILY HOME
- BATHROOM
- PRIVATE GARDEN
- SEMI DETACHED HOUSE
- THROUGH LOUNGE
- SEPERATE WC
- OFF STREET PARKING FOR TWO CARS



SPACE
RESIDENTIAL

3 Bedroom House - Semi-Detached located in Edgware

Space Residential are delighted to present this super sensibly priced three bedroom semi detached family home for sale.

Briefly the house comprises:

A through lounge with doors to garden

2 decent size double bedrooms

1 large single bedroom

A family bathroom with separate WC

A large private garden with side access

Hard standing off street parking for two cars

Huge potential for further extension at the rear or into the loft subject to planning.

Available for sale CHAIN FREE

Call us on


0208 906 2222

info@spaceresidential.com

spaceresidential.com

Council Tax Band

E

Energy Efficiency Rating		
	Current	Potential
<i>Very energy efficient - lower running costs</i>		
(92 plus) A		
(81-91) B		
(69-80) C		
(55-68) D		
(39-54) E		
(21-38) F		
(1-20) G		
<i>Not energy efficient - higher running costs</i>		
England & Wales		EU Directive 2002/91/EC 

Agents Note: Whilst every care has been taken to prepare these particulars, they are for guidance purposes only. All measurements are approximate and are for general guidance purposes only and whilst every care has been taken to ensure their accuracy, they should not be relied upon and potential buyers are advised to recheck the measurements.

SPACE
RESIDENTIAL